

Remove your Existing Toilet



Step 1

Turn off the water supply to the toilet



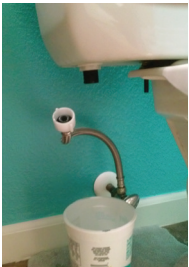
Step 2

Then flush the toilet.



Step 3

Use a plunger and a sponge to get the water out of the bowl



Step 4

Using a bucket, unhook the water supply and drain the remaining water from the toilet's tank.



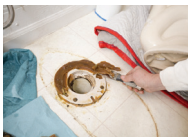
Step 5

Remove the existing closet bolts from the toilet.



Step 6

Remove the existing toilet.



Step 7

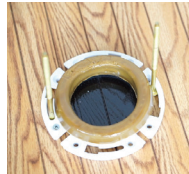
Remove the old wax ring and closet bolts

Install the Easy Toilet Riser



Step 8

Slide in the new extended 6 inch closet bolts in the existing flange



Step 9

Place one of the wax rings provided in the kit on top of the flange



Step 10

Carefully install the toilet riser over the closet bolts



Step 11

Apply pressure to the top of the Riser to properly seal the wax ring with the existing floor flange



Step 12

Place the second wax ring on to the riser flange

(optional step) if you ordered the Medway 19" Easy Toilet Riser



Step 13

Place the 19" riser apron over the base riser and adjust as necessary to accommodate your toilet

Re-install your old Toilet



Step 14

Reinstall the toilet on top of the toilet riser



Step 15

Apply pressure on the bowl to properly seat the toilet.



Step 16

Install nuts and washers



Step 17

Do not over tighten



Step 18

Install the new water supply line and turn on the water



Step 19

Congratulations! You can now use your new raised toilet!

MEDWAY

The Medway Easy Toilet Riser can normally be installed in less than an hour by most handy persons.



What you will need for installation



Putty knife to scrape off the wax ring



Trash bags to dispose of the old wax ring



Paper towels to remove excess wax from the putty knife and dispose in the trash bag.



Mineral spirits can be used if necessary to remove excess wax from the waste flange and to clean your putty knife



Rags to use with mineral spirits to remove the old wax ring



If your toilet is old, the closet bolts may be rusted and you may need a small hacksaw to cut them off



An adjustable wrench for removing and installing the nuts on the closet bolts and for unhooking and rehooking the water supply



There are many pathogens on your toilet and on the wax ring. Be safe and wear a good pair of rubber gloves

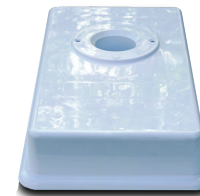


A sponge for getting water out of the toilet before you remove it and for cleaning up any messes



A small pail to drain any remaining water from the toilet's tank

A Medway 14" Easy Toilet Riser Kit



TOP VIEW

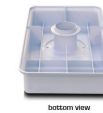


BOTTOM VIEW

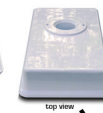


The Meday 19" Easy Toilet Riser Kit contains all of the above and the 19" riser apron shown below

Medway 19" Toilet Kit



bottom view
The Original Toilet Riser



top view



bottom view
top view
19" Medway Toilet Riser Apron

Installation parts included

